



**10<sup>th</sup> Taekwon-do ITF European Cup**  
**SOCHI, RUSSIA**  
**6<sup>th</sup> – 9<sup>th</sup> June 2019**



**“Aisberg” Ice Palace**

This is a place for large international and national competitions and cultural events.

Arena "Iceberg" has programmable ice cover allowing to change the surface in depending on the type of competition.

"Iceberg" is a universal complex, where can take place not only winter competitions but also summer kinds of sports. This is possible thanks to the special terracover insulation placed directly on the ice.

In the arena, there are two microclimate - separately for the stands and for the ice cover.



During the XXII Olympic Winter Games the object was used for figure skating and short track performances. On June 1, 2014, the Ministry of Sports of the Russian Federation transferred it to use to the Federal State Budgetary Institution "South Sport". The object is located in the Coastal Cluster of the Imereti lowland of the Adler district.

## LOCATION



# POSSIBILITIES

- - Building area: 2053m<sup>2</sup>
- - Total area: 67800m<sup>2</sup>
- - Floor space:5
- - Highest mark: 37.5

- **1st floor**

Ice arena with the area of 30.0 x 60.0 m, seats for the less mobile spectators, premises for sportsmen (including eight team undressing rooms, universal sports hall, buffet, equipment room, skate sharpening point, sportsmen's medical service premises, etc.), doping control rooms, a medical center for spectators, rooms for coaches, judges, federations' representatives, lobbies for spectators of the government and VIP zone, spectators of the parterre, spectators with disabilities, representatives of the press, administration and service staff, cupboards, wardrobes, medical station, sanitary facilities, public order premises, security services, fire station and other engineering and technological premises and services (including refrigeration center, pumping room, storage room for ice-cleaning machines), as well as points of entry of equipment into the arena and loading of foodstuffs into public catering facilities.

**2nd floor.** Lower tier of the stands, auxiliary rooms for spectators: foyer of the first tier of the stands, sanitary facilities, buffets, utility space, seats for spectators with disabilities in the corner sectors of the arena.

**3rd floor.** Government box (special area), foyer, support space and boxes for VIP spectators, Olympic family, administrative offices.

**4th floor.** Top tier of the stands, including press seats, press centre rooms, spectator support areas: lobbies, foyers, toilets, buffets.



# FUNCTIONAL ZONING

- The seats for spectators are designed around the stands in two tiers, as well as in the boxes with lounges. Smoke-free stairs from ground level to spectator foyer levels are provided for loading and unloading the spectators. Lobby areas and foyers are provided for, Galleries and lobbies for viewers on different levels. The foyers of the lower and second levels are connected by galleries and open stairs along the entire perimeter of the building. Buffettes and sanitary facilities are distributed in proportion to the number of viewers. Sanitary facilities for spectators with disabilities are located in the immediate vicinity of their seats on the stand.

-All the athletes' rooms are grouped on the ground floor and have their own lobby.

- Spectators of the VIP zone (boxes for 630 people) enter the building through separate halls. Special staircases and elevator blocks are provided for communication on the floors.

- The government area has its own lobby, from which visitors can use a separate staircase or two elevators to reach the level of boxes (for 50 people). There is a possibility of access to the area of the premises for athletes and access to the arena.

- The press also has its own entrance hall. The press centre is located at 4 and 5 of the floors, there is a special staircase and elevator unit for communication on the floors.

- The public order premises are designed to be provided with the following of operational communication with various parts of the building.

- The interiors' internal logistics are made with the use of colour: each floor has its color solution, which helps viewers to orientate between tiers and sectors of The Ice Palace.



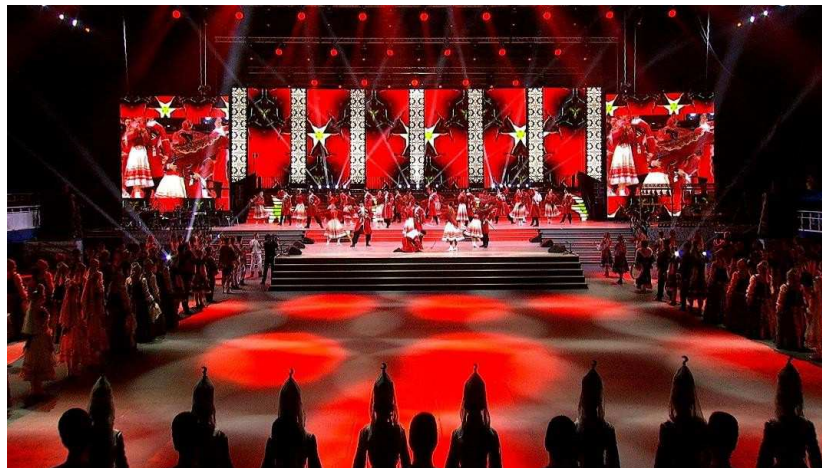
# PROFESSIONAL EQUIPMENT

Press center equipment

Staging equipment

Sound reinforcement

Video screens



# LOCATION

## Imeretinsky Hotel Complex



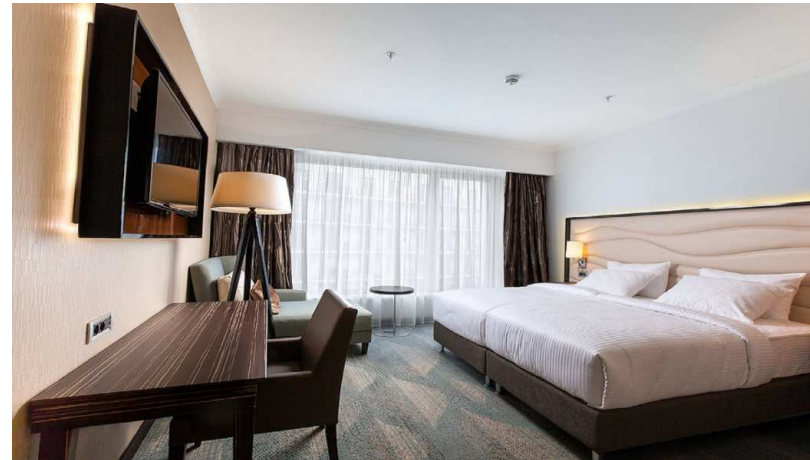
Hotel complex "Imeretinsky" offers accommodation in the 4-star hotel, as well as in the apartments of the coastal quarter.



# Imeretinsky Hotel 4\*

Imeretinsky Hotel 4\* has 196 rooms, of which 181 are standard rooms (100 with one bed, 60 with two twins), 14 suites and 1 presidential suite.

«Suite»



«Standart»

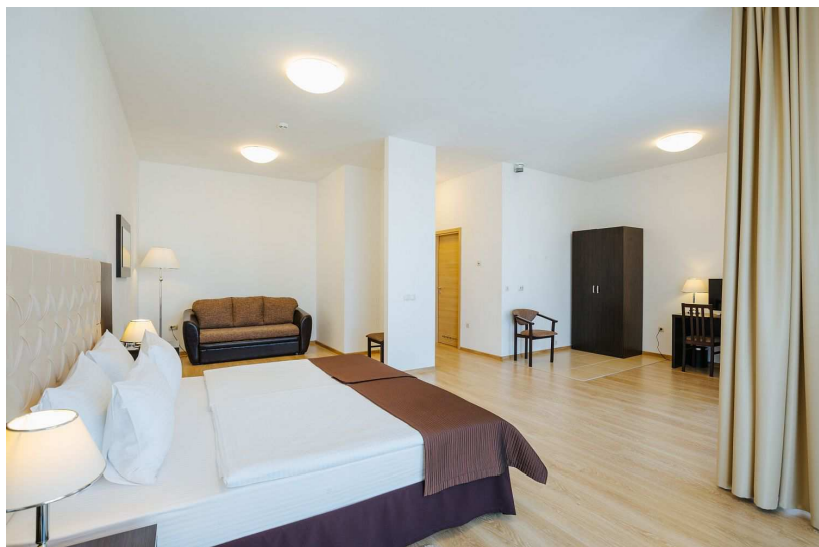


# IMERETINSKY APARTMENT HOTEL 3\* COASTAL BLOCK.

1028 apartments: one-room, two-room, three-room and four-room apartments



«Studio suite»



«Standard suite»



# MEALS

**The Bosphorus Restaurant** is located on the ground floor of the hotel. Local and European cuisine is on the menu, a traditional wine list and a large a variety of desserts. Restaurant's hall is designed for 120 people. From the summer terrace opens a beautiful view of the Black Sea coast. The restaurant is open from 07:00 to 00:00 (includes a buffet menu at the Bosphorus Restaurant).



**Lobby bar:** aromatic coffee and optimal menu the lobby bar allows you to feel the pulsating The rhythm of business life, and a cozy atmosphere disposes to business negotiations and friendly communication. The bar is open 24 hours.



**Restaurant "Library"** (up to 40 people) - is located on the 7th floor of the hotel, with a panoramic view of the Black Sea coast, mountain peaks and the Olympic Park.



**Café Capri and Crete**, located at of the "Coastal Quarter" area, offers Breakfast, lunch and dinner in the Swedish format of the table.

# Tasty cuisine



# Welcome to SOCHI, RUSSIA

